

Corban Estate Art Centre,
THE STUDIO,
cnr 426 Great North Rd &
2 Mt Lebanon Lane,
Henderson.
T: 09 838 5733;

Waitakere Central Community
Arts Council, PO Box 21-447,
Henderson, Auckland 0650
OFFICE HOURS: 9h30am to
2.30pm Mon-Thurs



Newsletter

October/November

2017

Committee 2017-2018

President

Marion Sutcliffe

Vice President

Gerry Andrews

Secretary

Jean Cooper

Treasurer

Mary Malpass

Committee

Janet Fuge (Immediate
Past President)

Roy Malpass

Inga Fillary

Peter Purcell

Galina Efimova

Sue Butler

Roshan Masoumi

**Arts Coordinator/
Bookkeeper**

Diane Costello

www.waitakerearts.com

PRESIDENT'S REPORT

Didn't we hold a fantastic Trust Exhibition? It was really good that our own Peter Purcell received 2nd Prize. Also Bruce McKinstrie was chosen by the public for popular sculpture prize. I was very proud to be representing you all on opening night. Thank you to all for entering your artworks.

Sue Butler did a sterling job of taking over from Lynette McKinstrie down in the shed. Lynette is to be thanked for guiding her with this task. I don't think people realise how much work is involved. Diane prepares in the office while someone has to be in the shed to do all the various jobs. We are desperately short on volunteers especially males with a little muscle.

Now the office is looking like it is back to normal. It was good to see Diane's desk again. It has been covered in papers thick for the last few weeks.

We are holding the Christmas Party on Monday 4th December. We have decided to hold a Special AGM in late January or early February to formalise the Constitution and this should not take too long. This is an important document which does need to be updated and formally changed and this is prepared by the committee.

I don't know where all the time has gone. Another year over and now we are preparing for 2018. We have April earmarked for our members exhibition, so keep the good work coming.

Thank you

Marion Sutcliffe

Membership Payments should all be paid by now. If not, you will need to pay for this year and next year's membership.

Banking details:

Kiwibank: 38 9018 0675 154 010 or cheque or cash

\$40 Individual; \$60 Family (\$40 primary member & \$20 partner, under 18 free); \$20 youth (school, tertiary, university with ID).

HURRICANE APPEAL

As you may be aware, we launched an appeal for Tracey who lives in Houston, Texas. She is the daughter of one of our members, Jean Cooper. She has visited our studio on many occasions while in New Zealand.

Hurricane Harvey destroyed her home and contents. She has to rebuild her life when she should be working towards retirement. At the moment she is living in a mobile home until they can rebuild.



I thought it would be good if our members could donate \$5 or \$10 each so that we can assist in this matter.

The online bank number is:

J. M. COOPER 06-0199-0098198-00

Thank you so much

OUR YOUNGEST MEMBER JENNIE LEE



Jennie, youngest active member in our group and granddaughter to our President, Marion Sutcliffe.

You may have seen her around from time to time on a Monday, or met her at the entrance to our Trusts Exhibition, giving out tickets for wine.

Although she is too young to enter the Trusts exhibition at the stage, she's always around to give a helping hand. This is good training for her future, perhaps a future President of WCCAC?

Together with her twin brother, the 10 year olds are home-schooled. Jennie's interests lay in the arts. She attends the Monday open sessions on a regular basis and is learning from the different artists.

She particularly enjoyed the pouring method which Ken Padgett taught her and she produced some fabulous abstracts of her own.



Singing is another interest of hers as her elder sister is a singing teacher.

COORDINATOR'S CORNER

I would like to thank both Committees, the Membership, Sue Butler and in particular Madam President, Marion Sutcliffe, who is such a great support and so diligent in her duties as President. I do so enjoy this job, not always easy (time constraints and deadlines), but that goes with every job. I have a wonderful view, lovely people to engage with and some really inspirational artists, so I'm in the right spot. The quality of the artwork that goes through our rooms is really inspiring and not to mention those tips that keep coming.

What a fantastic exhibition we put on this year for The 31st Trusts Art & Sculpture Awards Exhibition. And it's all down to working together as a team, so a big THANK YOU to you all. As has been mentioned, well done to Sue Butler who took the beast (not bull) by the horns and did a fine job! Thank you too to Lynette McKinstrie for her continued support and someone who keeps us on the straight and narrow, we are truly fortunate to have people like her. So to the team as a whole, not good job, GREAT JOB done!

Have a good Christmas and New Year and no doubt I'll see you around the rooms.

Diane Costello
Arts Coordinator

SOME IMAGES FROM THE 30TH TRUSTS ART & SCULPTURE AWARDS EXHIBITION 2017 BRING IN DAY WORKERS



SHED 2



**JUDGES: CORA-ALLAN WICKLIFFE; LINDA TYLER;
PHILIP M. CLARKE**



TTASA 2017

PEOPLE'S POPULAR CHOICE AWARD WINNERS

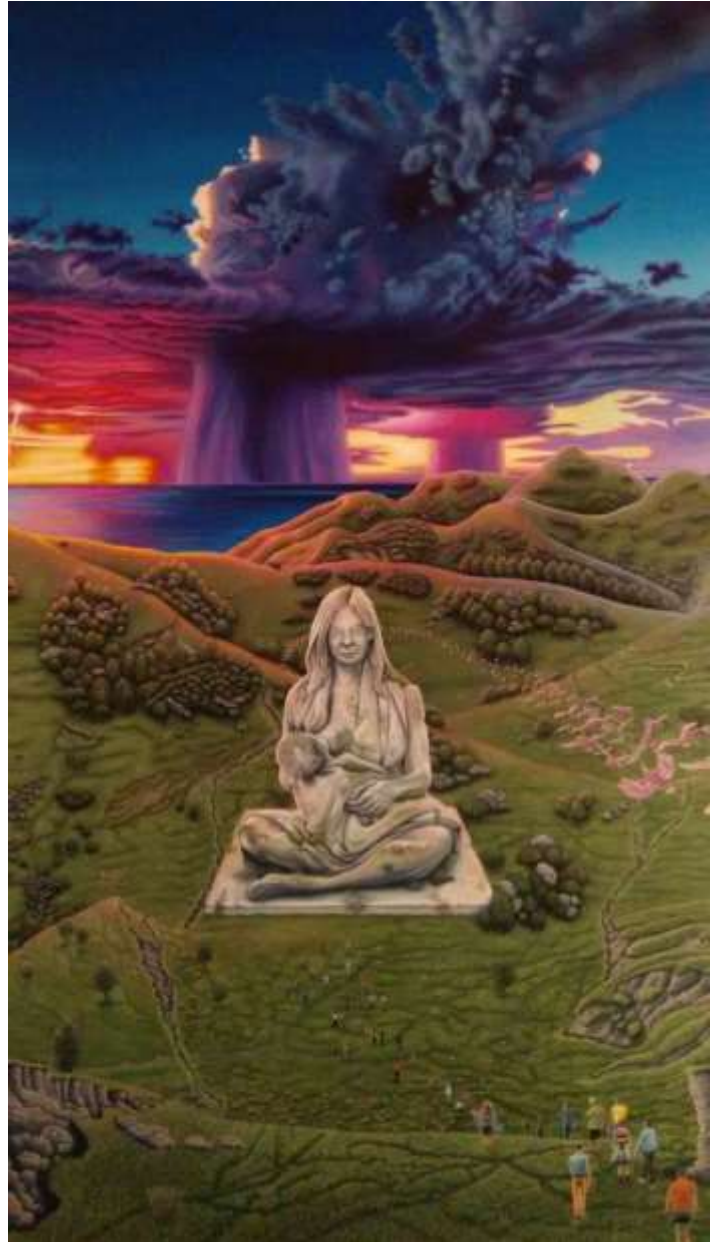
A BIG congratulations to those winners who were the public's choice.

ART

The Statue of Eternal Maternity

The painting is about people recovering from trauma, in this case the Kaikoura earthquakes.

GARETH PRICE



SCULPTURE

Talulah and her wire-haired
terrier

BRUCE MCKINSTRIE

Whilst out walking with my wife and our dog, the shadow
they created inspired me to do this sculpture.



16-18 ART

The Situation

HARRY GRIFFIN



16-18

PHOTOGRAPHY

Lit by the night

SHANE KRAUS



13-15 ART

Chameleon

DANIEL KWON



13-15

PHOTOGRAPHY

Tomtit Reflection

HENRY HANSON

On a walk to the Waitakere Dam we came across a female tomtit clinging onto the petrol cap cover of a car, checking out her own reflection in the shiny black paintwork. The combination of nature and man-made machine makes for an interesting combination.



MAGIC REALISM IN PORTRAITURE – THE GROUP SHOW, OPANUKU STUDIO 13TH – 15TH OCTOBER



Friday 13th of October was an exciting day for the six painters in the Magic Realism Show. It was the first time since the Liam Barr summer school that everyone had been together. There was a buzz in the Opanuku Studio as the painters decided where in the space and how they would display their 27 paintings. Although the

vibe was really positive, it was tinged with the usual fears associated with 'putting your work out there.' The painters supported each other, knowing this nervousness is something everyone experiences. Having resident painters Charlotte Graham and Tony Brown plus the people from Corbans: Martin, Mandy, Sophie, Megan and others - popping in to see the progress, added immensely to the wonderful experience of 'the hanging day.'

Just having work exhibited was satisfying, because as prolific artist, Val Enger says "It's hard to sell portraits. Especially when they're your personal ones." She also had a number of landscape works for viewing which received quite a lot of attention. Caroline Bensinger showed portraits of her long-time friend Rachel which



were not for sale. She had two of her mandala works concurrently on show across at the Trusts Awards exhibition. She was thrilled with the group show, calling it intimate and personal with lots of whanau and friends visiting the show and lots of kai and drink at the opening. She liked that everyone got involved and really appreciated that CEAC supported the show and donated the Opanuku space.

Tiriwa Watene's political and confrontational work *Kiwis mate*, *Kiwis* raised a few hackles and he was asked many times throughout the show to explain it. Friends offered to buy the huge work - portraits of Admiral Lionel Halsey and chiefs from Māoridom on board HMS New Zealand, but Tiriwa said it wasn't for sale because it wasn't finished. The friends quipped the NFS sign really meant Not Finished, Sorry. The 1800mm tall abstract *Kuia* was much admired. Māori and Pacific viewers showed their empathy for the work and

appreciated the layers of his message. Tiriwa would like to work towards a solo exhibition in the not too distant future.

Eleanor Bones' *Oil Derrick – a Madonna* was on the publicity poster and became the signature painting for the show. The observations for this work were kick-started in 2001 when she was reading about the Middle Eastern oil conflict. It's an emotive allegory about possible consequences of the universal theme of greed. The work was initially sold on the last day of the show, but the buyer subsequently reneged. A good



thing, says organiser Sue Gee. That painting is worth ten times more than what El asked. Some mentorship around pricing is something Sue would like to organise.

Janet Shepherd had a good day. The value of a name was brought home to her. She sold three paintings, two of them after they were renamed for the catalogue. A misty

landscape called *Sunrise* became *Waking from the Dream*. An Arrowtown boulevard with two figures in the foreground had been shown before and was initially called *Autumn Leaves*. It sold to a very happy German couple after the title was changed to *Autumn of Life*.



Monica Paterson couldn't be happier. Her work reflects her yearning for a reconnection with her Samoan roots. She was happy to be part of the group and part of the exhibition but she never predicted she would sell seventeen prints from her paintings. She posted about the show on her facebook page and got a lot of traffic and ten fb sales. Over 50% of the sales were for framed prints which sold for \$390 each. Unframed they sold for \$200. Monica said the show surpassed anything she ever thought it might be, it was so successful.

Organiser, Sue Gee, says bringing the group together and putting on the show was very very satisfying. Her original inkling, back in January at the end of the summer school, that this could be a group that paints together, grows and stays together is coming true. Three new painters are joining the group which paints monthly in the WCCAC Studio. Several of the original group have already registered for the up-coming summer school courses – she wonders where that might lead.



REWI ALLEY– ONE OF NEW ZEALAND’S OWN

Intrigued by what he had read about China, Rewi Alley left New Zealand in December 1926 ‘to go and *have a look* at the Chinese revolution’. He would stay for 60 years, becoming one of China's best-known and best-loved foreigners.

By the age of 29 Rewi Alley had done little that would set him apart from any of his contemporaries. Like thousands of other young New Zealand men he served overseas during the First World War. Then, on his return, he and an old school friend took advantage of a returned soldiers' settlement scheme to purchase land in Taranaki for a sheep farm. But their efforts to break in and farm the land were marred by low wool prices. After ‘six years of loneliness and struggle’, his friend advised that he intended to get married and Alley decided to leave the land to him and head to China to see the revolution at first hand.

Alley arrived in China on 21 April 1927. Over the next 10 years, working variously as a fire officer, factory inspector and relief worker, he laboured among the Chinese trying to improve their living and working conditions. He came to greater prominence during the Japanese invasion of China in 1937, after he was involved in efforts to found the Association of Chinese Industrial Cooperatives (INDUSCO), commonly known by the slogan Alley coined, ‘Gung Ho/Work Together’. Gung Ho aimed to organise small-scale self-supporting cooperatives which created employment for workers, while continuing production to support resistance against the Japanese. A *Time* magazine article from April 1940 noted:

The advantages of cooperatives were many ... The units were mobile, easily disguised, easily housed, and were not, like big factories, obvious targets for Japanese bombers. They supplied military needs which no other source in China could produce so efficiently ... Above all they provided millions of refugees who trekked west on the heels of freedom with the hope of lasting relief in the form of jobs ... Cooperatives entirely revitalized whole towns.

As part of the Gung Ho movement Alley envisaged training young Chinese in the skills that the co-operatives needed. In 1940 he was involved in setting up schools in various parts of the country. Some failed, but one in a tiny village called Shuangshipu (Feng Xi'an) was revitalised in 1941 under the leadership of George Hogg. Alley returned there often and assisted in its move to Shandan in December 1942, when the school was threatened by the Japanese advance. After Hogg died from tetanus in July 1945 Alley took over as headmaster. He continued at the school after the Chinese Communist Party came to power in 1949 but gradually lost control to local party officials.

By 1953 Alley had settled in Beijing. He immersed himself in writing about China and travelled extensively, speaking on behalf of international peace agencies, such as the World Peace Council. But his great achievements, Gung Ho and the school at Shandan, were never far from his mind. In his 80s he and other Gung Ho veterans successfully set about reviving the organisation. He also conceived a plan for a new Shandan School that would meet the present-day needs of the region. It opened on 21 April 1987, the 60th anniversary of his arrival in China.

Before and after his death on [27 December 1987](#) the New Zealand and Chinese governments honoured Alley for his work in China. They have continued to do so in recent decades. In 1997 and 2007 events were held to mark the 100th and 110th anniversary of his birth.

With an interest in history that stemmed from his early visits to the Canterbury Museum and his favourite school subject, history, Rewi found an appreciation of the workmanship of the old pieces of pottery, carvings and ornaments he had found in stalls in his early days in Shanghai, when he started collecting



objects that appealed to him. As opportunity presented itself, he developed and added to his collections all his life. Many pieces were sent back to the Canterbury Museum but he also maintained key pieces in various collections in China.

Click on the link to hear about “Rewi Alley Art collection goes online”

<http://www.radionz.co.nz/national/programmes/ninetoon/audio/201801851/rewi-alley-art-collection-goes-online>

Rewi Alley Legacy

<http://rewialley.kiwi.nz/about/>

This collection features a painting by Li Keran, of a herd boy and water buffalo, with dedication to Rewi Alley. The collection also includes a painting of waterlilies by Li Weiqing, ancestor portraits, and a painting given to Alley in 1934 by colleagues.



Jade is a highly prized material in Chinese culture. The Rewi Alley Collection at Canterbury Museum has a variety of jade forms, including bi, cong, and huang. Two areas of the Rewi Alley jade collection stand out: daigou or belt buckles, and jade gui and other adze-shaped forms. Alley took a scholarly interest in daigou, and published an article on the form in 1956. Adze forms also interested him, as well as Canterbury Museum director Dr Roger Duff, who traced the beginning of a particular adze typology found across the Pacific to the Chinese coast. Small jade objects were ideal to give to New Zealanders visiting China

to deliver to Canterbury Museum.

Group Sessions

THE MAGIC REALISM PAINTER'S GROUP

See page 10 & 11

New Facebook page for the Magic Realism Group

<https://www.facebook.com/MagicRealismGroupShow/>

AUCKLAND WEST PHOTOGRAPHY CLUB (MONTHLY)

When: Wednesday, 29th November, 7pm (every last Wednesday of the month)
Where: The Studio, Corban Estate Arts Centre, cnr 426 Great North Rd & 2 Mt Lebanon Lane, Henderson
Contact: Diane on 09 838 5733 or 022 088 7928
Cost: \$2 per session

As this will be the final session for 2017, please bring along a small plate in celebration of Christmas to have with your cuppa tea or coffee.

This session will be a little different from the usual critique sessions we have been holding and images will be judged. You may bring 4 of your best images.



Weekly Group Sessions

MONDAY NIGHT PAINTERS GROUP

When: Every Monday night 7pm to 9pm
Where: The Studio
Contact: Carmen on 09 818 5592

NEWCOMERS WELCOME

LIFE DRAWING GROUP - AFTERNOON

When: Every Wednesday, 12.30pm to 3.30pm
Where: The Studio
Cost: Contact Gillian Palmer on 09 818 1306 AFTERNOON SESSION

LIFE DRAWING GROUP - EVENING

When: Every Thursday 6.30pm to 9pm
Where: The Studio
Cost: Tatiana Zimina on 021 239 4924 for EVENING SESSIONS

FRIDAY GROUP SESSION

When: Every Friday from 10am
Where: The Studio
Contact: Nada Allen on 09 818 8330

Open Sessions for Members

When:

- Every Monday 9am to 11.30am (no oils after 11.30am);
- Every Monday 12pm to 3pm
- Every Tuesday night 6.30pm to 9pm
- Every Thursday from 9am to 12.30am

Where: The Studio

Contact: The Office
wccac@xtra.co.nz
09 838 5733 or 021 232 4438

Tutored Classes

GABRIELLE RYBURN'S DRAWING & PAINTING CLASS

When: Every Wednesday, 10am to 12pm (SPACES AVAILABLE)
Where: The Studio
Cost: Contact Gabrielle 09 412 9255

I teach comprehensive drawing techniques, using media ranging from pencil, through graphite, to charcoal and ink beginning with line drawing, progressing to tonal rendering as a foundation for painting which is generally done in acrylic. In my own work I use pastel, oils, pastels, water colours and acrylics.

Gabrielle has been painting for over 40 years and is a master of portraiture and the creator of beautiful still life and landscape works.



HELEN STEVEN'S WATERCOLOUR CLASS

When: Every Thursday, 1pm to 3pm (SPACES AVAILABLE)
Where: The Studio
Contact: Helen on Ph 09 834 5832 or 09 838 5733

Helen is a well-established watercolour artist who is recognised for her skill and expertise as a watercolour expert, with many years of teaching. She has won numerous awards and her paintings sell in New Zealand, Australia, Asia and England.



MONDAY	Open Studio 8.30am – 1.30pm (no oils after 11am to assist those with solvent allergies)	Open Studio 1pm – 4pm (no oils) as this is a shared space with the Photography session	Monday Painting Group 7–9pm Contact Carmen on 09 818 5592
TUESDAY	Bellas Artists: Lynette McKinstrie Group booking Morning FULL		Open Studio Evenings 6.30pm – 9.00 Contact Odile Koper 09 836 4953
WEDNESDAY	Tutored: 10-12pm Drawing and Painting with Gabrielle Ryburn Ph 09 4129255	Life Drawing: 12.30 – 3.30pm \$12-\$15 per session Includes model fee Contact Gillian Palmer on 09 8181306	Auckland West Photographic Society Monthly – last Wednesday of the month Contact Diane - 0220887928
THURSDAY	Open Studio 8.30 – 12.30pm Drop in and join in.	Tutored: 1-3pm Watercolour painting with Helen Steven Ph 09 834 5832	Life Drawing 6.30-9pm \$12-\$15 per session Includes model fee Contact Tatiana Zimina - 021 239 4924
FRIDAY	Friday Painters group booking 9.30-12.30pm. Contact the office for details	Available for Workshops, classes, projects.	Available for Workshops, classes, projects.
SATURDAY	Magic Realism Painting Group: 10am-3pm Sue Gee (once a month)	Available for Workshops, classes, projects	Available for Workshops, classes, projects
SUNDAY	Available for Workshops, classes, projects	Available for Workshops, classes, projects	Available for Workshops, classes, projects