

Corban Estate Art Centre,
THE STUDIO, cnr 426 Great North
Rd & 2 Mt Lebanon Lane,
Henderson.
T: 09 838 5733;
C: 0212324438
E: wccac@xtra.co.nz

Waitakere Central Community
Arts Council
PO Box 21-447, Henderson,
Auckland 0650
OFFICE HOURS:
9h30am to 2.30pm Mon-Thurs



Newsletter

November/December
2018

Executive Committee 2018-2019

President

Sue Butler

Vice President

Gerry Andrews

Immediate Past President

Marion Sutcliffe

Secretary

Mary Malpass

Treasurer

Galina Efimova

Committee

Janet Fuge

Roy Malpass

Peter Purcell

Roshan Masoumi

Jean Cooper

Smita Upadhye

Arts Coordinator

Diane Costello

www.waitakerearts.com

Membership:

\$40 Individual; \$60 Family (\$40 primary member & \$20 partner, under 18 free); \$20 youth (school, tertiary, university with ID).

Kiwibank:

38 9018 0675 154 010 or
cheque or cash

President's Report

To All,

Another year is coming to a close and the silly season is upon us.

Thank you Diane, Galina, Gerry and The Committee for working together so well this year.

We have made some changes to the Studio, for the greater good of those who use it. Our plan is to offer a greater variety of art practices, outings, small exhibitions and a retail space.

Our Members Exhibition will come up quickly so I hope that you are all feeling creative and looking forward to sharing your work in April 2019.

As you will see in the photos of the Christmas party we had a great number of Our Henderson Massey Local board members attend our Christmas party.

Our improvements to the Studio were noted and we thanked them for their support of us. In turn, all of the individual Board members spoke of the great job we were doing and committed to supporting Waitakere Arts in all its projects planned for 2019.

So well done Waitakere Artists for your enthusiasm and commitment to improving the validity of art enriching our lives.

Thank you Diane, from the Committee and Members, we hope that you have a lovely break.

And To All from me, Merry Christmas,

And an Arty New Year,

Cheers,

Sue Butler

PRESIDENT

Coordinator's Corner

I'd like to start my corner with a "*well I'm amazed it's already that time of the year again*". I heave a big euphoric sigh of relief and know that I've put heart and soul into the people and events organised at Waitakere Arts. It's now time to reflect on our two big exhibitions and strategise for an arty 2019.

Sue Butler, Galina Efimova and I have been fortunate to attend training workshops delivered by MPHS, which assist in providing the tools we need to steer WCCAC in the right direction. These skills and training is passed onto the WCCAC Committee and ensures we are current in our thinking, with the correct policies and procedures in effect. These **free** workshops are run by the MPHS Community Trust who are supported and sponsored by the **Henderson-Massey Local Board**. We take advantage of the Governance and Organisation training and development and this has been invaluable to the office staff at WCCAC. On the financial side, we have had Irina Cherkasova from MPHS provide training and back up support for the Xero accounting package we use. Irina has been fantastic in assisting us gain a better understanding of this powerful accounting system.

Well done Team! We have a fantastic Committee who volunteer many hours of their valuable time and I'd like to thank them most sincerely for their support. We most certainly could not do this without you!

To our Members, your support in terms of assisting with our exhibitions is most valued and appreciated; we do put on a great show **ALL 32 YEARS OF TRUSTS SPONSORED EXHIBITIONS!** The Trusts are our key sponsors and place value on supporting West Auckland businesses. Our exhibitions give back to the community through The Trusts sponsorship and both artists and art aficionados alike look forward each year to these exhibitions. As Pablo Picasso said "*Art washes away from the soul the dust of everyday life*".

At year end, I'd like to again acknowledge the support of the local **Henderson-Massey Local Board** for your support of Waitakere Arts; the heat pump has certainly warmed our members during the winter months and will go a long way to ensuring a cool brow in the height of summer. In addition, we've been able to institute other upgrades to the rooms. Many thanks to the Corban Estate Arts Centre for supporting and assisting with these upgrades.

This year, we were fortunate to receive a Lotteries Grant for additional administration support for our Bookkeeper Galina Efimova who previously worked for Waitakere Arts in this capacity as a volunteer for over three and a half years.

A reminder to our members that we have a fantastic collection of library books for you to borrow, so please take advantage of these inspirational books which are now housed in the kitchen. Have a cup of tea and a browse. Art never changes but liberates your soul and flicking through books gives us inspiration and ideas for the next project.

On a final note for the year, we must thank Auckland Council's ongoing support of WCCAC over many many years. Our President, Sue Butler has been fantastic to work with. She has an extremely busy life, balancing her own art as well as her business and has worked hard to make a significant contribution to WCCAC. Your support of me has been a credit to our organisation and commitment to improving our Not for Profit organisation.

To our Sponsors and Members, have a wonderful Christmas and New Year. The rooms will be open to our members for Open Studio, so please check the calendar on Page 37. If you are a member, you may also obtain a key from Corban's reception. Regards & have fun with your art, **Diane Costello, ARTS COORDINATOR**

NB!

- **NEW INCENTIVE: ONCE A MONTH CRITIQUE SESSION by an independent judge. 3.15PM – 5PM**
Bring 2 paintings to be assessed by an independent judge. \$2 per person;
Wednesday, 30th January 2019 : 9.30pm to 12.15pm
- As a Member of WCCAC you may also book The Studio for children's parties or other sessions.
- If you have anything of interest for the newsletter, please let me know.
- If you are keen on joining the **Exhibition Committee**, please advise either Sue Butler or Diane Costello.

WORKSHOPS

We have a good number of workshops being planned for 2019. Please note that cancellation policy must be at least 2 days in advance, otherwise full payment is due. Classes are limited, so please book early.

- **PAINTING WITH COLOUR with Dr Louise Allen;** One day Oil or Acrylic Workshop on
SUNDAY, 27th January 2019: Cost \$75 (see full details on Page 17)

Ken Padgett workshop on Oil painting
WEDNESDAY, 6th February 2019 @ 9.15am to 12.15pm
Cost: \$7

You will be painting this landscape (right) and will need to do the finishing touches at home, full instructions will be provided.
Spaces limited, book early.

Ken is a highly skilled artist and a very interactive tutor.



- **Helen Steven's Watercolour Workshop 14th February 2019, 1pm to 3pm.** Helen will give a demonstration with a view to future classes.
- **Helen Steven's** Pastel workshop (please advise If you are keen)
- **Sue Butler's** Children's Paper Mache Workshop (please advise If you have grandchildren who would be interested)
- **Intense Impressionist, Abstract & Surrealist Photography Workshop (2019) by Diane Costello & Murray Noble LABOUR WEEKEND, 26th, 27th, 28th October 2019 in St Michaels Church, Corbans Estate.**
Included: Friday, 25th Oct free session 3pm-5.30pm on "What to do with the different camera settings".
Cost: \$375 and 10% discount for early bird registration up until June 2019. We will also have two special guest tutors from Australia, Ken Ball and Wendy Verity
- Hypertufa (garden art) workshop by Sue Butler 2019
- Life Drawing workshop 2019

WCCAC 2018 Christmas Party

THE STUDIO dressed for Christmas



PETER CHAN (DEPUTY CHAIR HENDERSON-MASSEY LOCAL BOARD); WARREN FLAUNTY (HENDERSON-MASSEY LOCAL BOARD); COUNCILLOR LINDA COOPER; DIANE COSTELLO (ARTS COORDINATOR); SUE BUTLER (PRESIDENT) SHANE HENDERSON (CHAIR HENDERSON-MASSEY LOCAL BOARD) & MARK JACKSON



SHANE HENDERSON CLUB HENDERSON-MASTY LOCAL BOARD
& MARK JACKSON



THE BLOKS - NICK LAMB, PETER PORCELL, JOHN MATSON,
CERRY ANDREWS (VICE-PRESIDENT) & ALEX ARINOV













JOHN & SHIRLEY BEVERIDGE



JOHN & SHIRLEY BEVERIDGE, NEREA BUKSH,
COUNCILLOR LINDA COOPER & MARGARET HOLWOOD



GALINA EFIMOVA & MARGARET NORWOOD



KEN PADGETT & VAL ENGER ART EXHIBITION @ CAFÉ KORERO, Ranui Community Centre, 433 Swanson Road, Ranui



Collaboration, that's what we like to do. The wonderful ladies, Susan and Janine from the Ranui Community Centre invited WCCAC to use their space in Café Korero to exhibit our member's artwork. We have made a splash with colour, design and exquisite content by Val Enger and Ken Padgett. Please visit this lovely café.

This display will come down around the second week in January. If you would like your artwork exhibited for a period, please let the office know:

wccac@xtra.co.nz or 021 232 4438 or 09 838 5733



Open Studios Waitakere 2018



Neena Buksh, Janet Fuge, Diana Won and Margaret Norwood joined Karen Kennedy in her home to show off their paintings, pottery, chutneys and pickles, ceramic sculpture and handmade dolls. We had 77 callers and most of us made good sales. It was a really happy weekend. Many thanks to the City Council for their wonderful support of West Auckland artists and craftspeople.

Karen Kennedy

Ps. This event is only open to people with a Waitakere address.



REMEMBER THESE SAD ROOMS 😞



WE'VE TURNED THEM INTO GLAD ROOMS 😊



Many thanks to the WCCAC Committee who supported this project (still ongoing) and you hard work!!

PAINTING WITH COLOUR with Dr Louise Allen

ONE DAY OIL OR ACRYLIC WORKSHOP

1 Day Session: Painting with Colour on Sunday 27 January 2019

Working with colour is not easy for a painter. This workshop is a safe space for experimentation and creativity specifically focused on improving the colour palette of participants, along with developing an understanding of how colour operates in both oil and acrylic paint and overcoming colour problems that individual painters bring to the session.

With – Louise Allen, Independent Fine Artist:

Holding degrees in Fine Art, Sociology and Dramatic Writing, Louise Allen is an award winning colourist painter, and an experienced University Lecturer. She uses oil on canvas and works out of a studio in West Auckland. She develops visual narratives using memory and imaginative associations. Producing neither fully abstract nor fully representational works, she negotiates this paradigmatic tension in the Fine Art Academy through balancing iconographic and symbolic forms which are then made more deeply and unconsciously associative through an evocative use of colour.

Timing: arrive 9.00 am for a 9.30 painting start. Finish painting 4.00pm. Pack down and leave by 4.30pm.

In the morning we will discuss experiences with painting with colour and set some goals. Then we will experiment with colour mark-making and colour palette.



In the afternoon a fresh painting will be started based 'loosely' on a still life.

Participants would bring their own materials ie: brushes, mixing and cleaning fluids, something to paint on (some paper for the morning and then a canvas or paper for the afternoon session) and Acrylic or Oil paints (no

watercolours or inks please). Please Note: No black or white paint is allowed. Easels are available. Maximum 12 participants. Session won't run if there are fewer than 8 participants.

Price: \$75.00 (sorry no concessions)

Venue: THE STUDIO, Corban Estate Arts Centre, cnr 426 Great North Rd & 2 Mt Lebanon Lane, HENDERSON

Tea & Coffee; easels; desk easels included.



DIARISE THESE DATES

AGM 2019: Mon, 25th March 2019

Member's Exhibition 2019: Fri, 12th to Mon, 22nd April 2019

Greater Auckland Art Awards & Exhibition 2019: Tues, 17th September to Wed, 9th October 2019

Tutored Classes

SMITA UPADHYE FULL FIGURE PENCIL DRAWING - TUESDAY

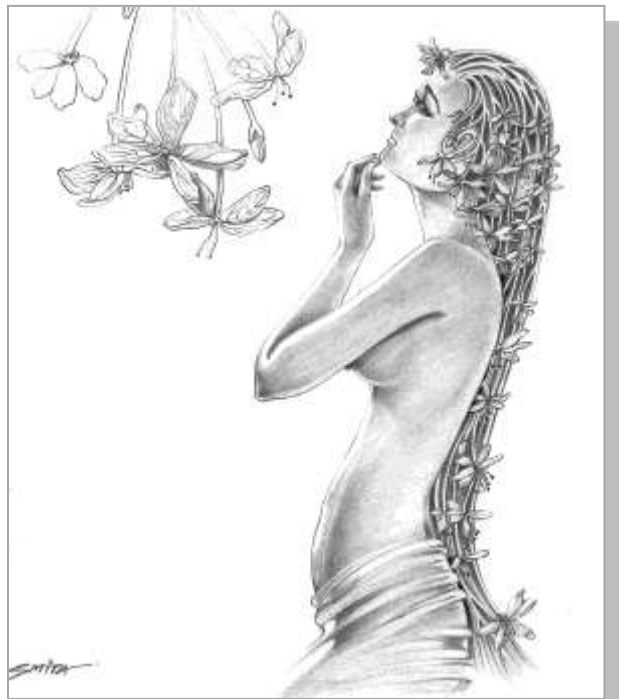
When: Every Tuesday, SPACES AVAILABLE

Time: 1pm to 3pm

Where: The Studio, Corban Estate Arts Centre, cnr 426 Great North Rd & 2 Mt Lebanon Lane, Henderson

Contact: Diane on 09 838 5733 or 022 088 7928 or Smita on 09 820 8654 or 027 4132 606

Cost: \$20 per session



SMITA UPADHYE – WORKING WITH COLOUR - WEDNESDAY

When: Every Wednesday (till mid March 2019), SPACES AVAILABLE

Time: 10.00am to 12.00pm

Where: The Studio, Corban Estate Arts Centre, cnr 426 Great North Rd & 2 Mt Lebanon Lane, Henderson

Contact: Diane on 09 838 5733 or 022 088 7928 or Smita on 09 820 8654 or 027 4132 606

Cost: \$20 per session



GABRIELLE RYBURN'S DRAWING & PAINTING CLASS

When: Every Wednesday, 10am to 12pm
(commencing mid to late March 2019)
SPACES AVAILABLE

Where: The Studio

Cost: Contact Gabrielle 09 412 9255

I teach comprehensive drawing techniques, using media ranging from pencil, through graphite, to charcoal and ink beginning with line drawing, progressing to tonal rendering as a foundation for painting which is generally done in acrylic. In my own work I use pastel, oils, pastels, water colours and acrylics.

Gabrielle has been painting for over 40 years and is a master of portraiture and the creator of beautiful still life and landscape works.



HELEN STEVEN'S WATERCOLOUR CLASS

Every Thursday, 1-3pm

Where: The Studio

Contact: Diane Costello on
09 838 5733/0212324438 or Helen Steven
on 09 834 5832

Helen is a well-established watercolour artist who is recognised for her skill and expertise as a watercolourist, with many years of teaching. She has won numerous awards and her paintings sell in New Zealand, Australia, Asia and England.



Group sessions

(rooms are permanently booked for these sessions and room rental is paid)

BELLA'S ARTISTS (closed group) – TUESDAY MORNING

Class is full

LIFE DRAWING GROUP – WEDNESDAY AFTERNOON

When: Every Wednesday, 12.30pm to 3.30pm
Where: The Studio
Cost: Contact Gillian Palmer on 09 818 1306 AFTERNOON SESSION

LIFE DRAWING GROUP – WEDNESDAY EVENING

When: Every Thursday 6.30pm to 9pm
Where: The Studio
Cost: Tatiana Zimina on 021 239 4924 for EVENING SESSIONS

AUCKLAND WEST PHOTOGRAPHY GROUP – WEDNESDAY EVENING (monthly)

When: Every second Wednesday of the month
Where: Lower Homestead, Corban Estate Arts Centre, cnr 426 Great North Rd & 2 Mt Lebanon Lane, Henderson
Contact: Doug on 0274816205
Cost: \$2 per session

This group is different to the usual photography club where the norm for this group is regular critique sessions interspersed with outings and workshops. On the critique session nights, please bring along 4 of your images on a USB stick

FRIDAY GROUP SESSION

When: Every Friday from 10am – 12pm
Where: The Studio
Contact: Diane Costello on 09 838 5733 or Nada Allen on 09 818 8330

Open Sessions for Members

(rooms are permanently booked for members, no room rental)

When: **Every Monday 9am to 11.30am (no oils after 11.30am);**
 Every Monday 12pm to 3pm
 Every Tuesday night 6.30pm to 9pm
 Every Thursday from 9am to 12.30am

Where: The Studio

Contact: The Office : 09 838 5733 OR 021 232 4438
 wccac@xtra.co.nz

Health & Safety

We at WCCAC are concerned about your wellbeing in our art rooms and will shortly have available an INCIDENT REPORT BOOK so that any near misses, i.e. when you nearly fall by tripping on something, etc can be reported and we can action this by resolving the hazard/problem. It is really important to emphasise that no matter how small the "incident", it is recorded so that we avoid any serious accidents resulting from this near miss.

ON ART

You probably had no idea that there are secret images hidden in these 14 famous works of art



There could be a biblical allusion in this Van Gogh painting. [Wikimedia Commons](#)

- *Many of the most famous paintings in the world are hundreds of years old.*
- *Even after all of this time, modern technology is helping us discover previously unknown "hidden" images concealed in the art.*
- *Using art restoration techniques, imaging technology, and even microscopes, art historians have been able to uncover some shocking secrets.*

People love finding [hidden symbols and secret codes in all sorts of objects](#) - including art.

It might be common knowledge that Da Vinci was an accomplished musician, but not many people know about the song he painted into "The Last Supper," using rolls and hands in the place of music notes. And you've probably seen the "Mona Lisa," but not with a microscope - she has a minuscule code hidden in her eyes.

Here are 14 famous works of art that have hidden symbols.

"The Ambassadors" by Hans Holbein the Younger has a hard-to-find reference to mortality.



This entire painting has a very realistic look to it, until you notice the blob (for lack of a better word) in the bottom-middle between the the two men.

Apparently, the "blob" is actually a skull that's been distorted. If you look at the painting from the right, it turns into a human skull. Some believe that the skull is a reference to the Latin phrase "memento mori," which means "remember you shall die." Memento mori was allegedly the motto of the man who commissioned the painting, Jean de Dinteville (the man on the left).

"Madonna with Saint Giovannino" by Domenico Ghirlandaio has found itself at the center of UFO conspiracy theories.



Yes, that blurry circle next to the Madonna's head has been at the center of a controversy for years. Many UFO conspiracy theorists are convinced that it's [a depiction of an alien aircraft](#).

While it doesn't look like much here, when zoomed in, the circle [definitely has a UFO-esque look to it](#).



The section of the ceiling of the Sistine Chapel, called "Creation of Adam," has an easily-missed reference to the human body.

The shape of the red cloak surrounding God is an astoundingly anatomically correct rendering of the human brain. Does this mean that Michelangelo believed that God was the creation of the human brain? That will never be known, but could be an interesting look into the brain of one of the most iconic artists in history.

This idea is so widespread it was even referenced by hit HBO show "Westworld."

"The Last Supper" has a song hiding in it.



Wikimedia Commons and Gregorio Borgia/AP Images

The song hidden within "The Last Supper" is an example of a real life "Da Vinci code."

An Italian musician discovered that when he lined up the rolls on the table and the hands of the Apostles on a standard musical staff, they worked as musical notes. This might sound like a long-shot, until you hear the song it produces.

Vincent Van Gogh is believed to have referenced "The Last Supper" in another one of his paintings: "Café Terrace at Night."



Some believe that Vincent Van Gogh, an icon in his own right, paid homage to Da Vinci in his painting "Café Terrace at Night." Specifically, there are 12 patrons at the café (like the Apostles), and the server in the middle definitely has a Jesus-like look to him.

There's also subtle cross imagery right behind the server in the windowpane.

Though hard to see, Michelangelo Merisi da Caravaggio included a little piece of himself in "Bacchus."



A small rendering of Caravaggio can be seen as a reflection in the jug of wine Bacchus has in his presence.

The mini-self-portrait was first noticed in 1922, more than 300 years after it was completed - but was forgotten about after years of poor preservation. It was rediscovered in 2009 using modern technology.

Before this discovery, it was unknown what the people in "Scheveningen Sands" were congregated around.



When

"Scheveningen Sands" was painted in the 1600s, it was a depiction of a group of beachgoers clustered around a beached whale. Somewhere along the way, the animal was painted over, leaving the group standing around for no visible reason.

When the restoration began at the Fitzwilliam Museum, restorators eventually uncovered what appeared to be a man floating in midair, but eventually the fin of the whale was revealed.

Why was the whale painted over? According to Shan Kuang, a restorator who worked on the painting, the depiction of a dead animal in paintings was considered offensive in the 18th to early 19th centuries.

Depending on the angle at which you view "David," you get two completely different stories.



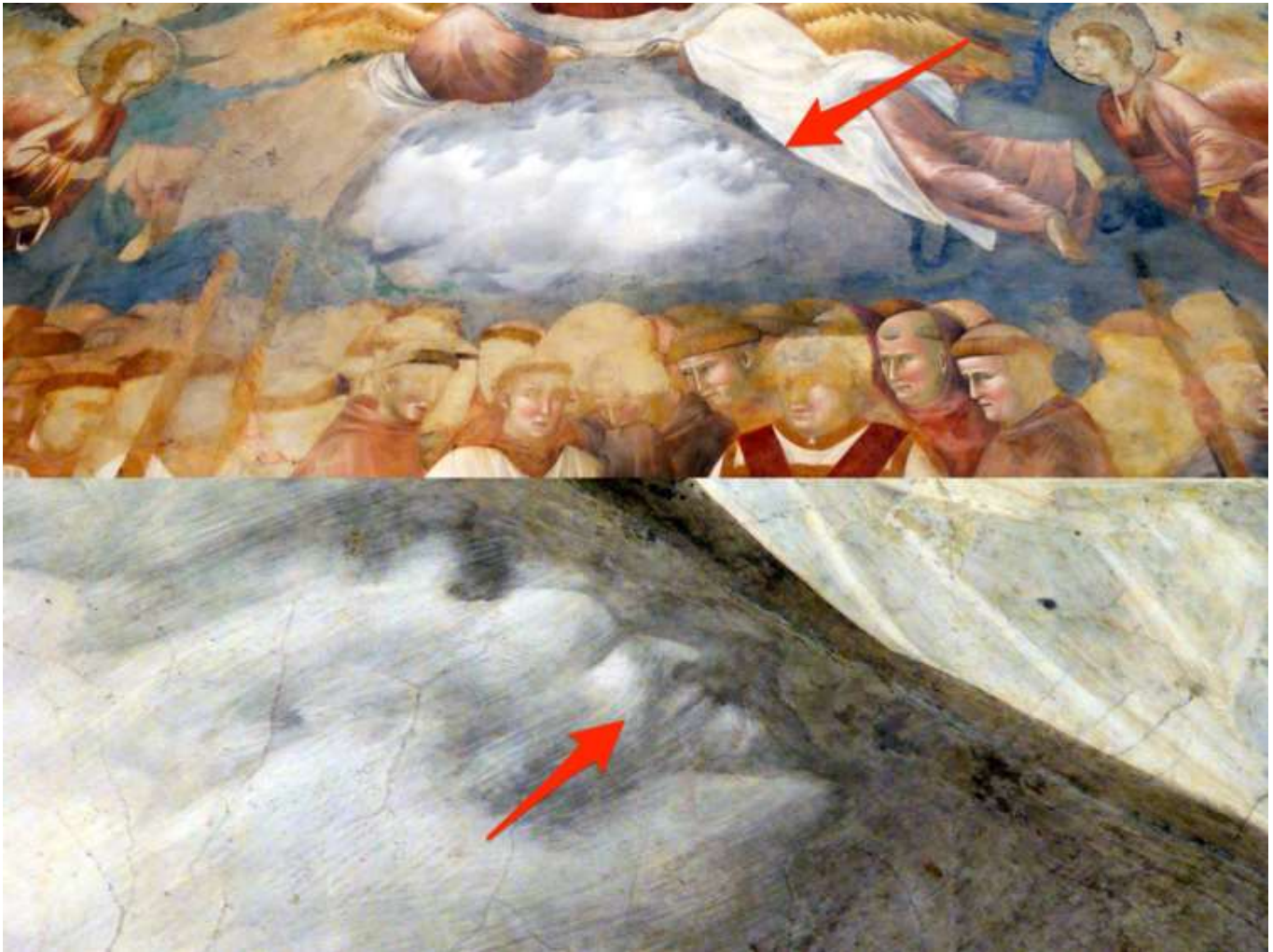
The statue of "David," of David and Goliath fame, is 17-feet-tall. It's entirely possible that Michelangelo never even meant for people to be able to look at his face head-on. Viewing him from below, as almost everyone does, he appears to have a calm expression on his face.

But when you look at him face-to-face, David clearly has an expression of fear, or maybe anger. This is because he's about to do battle with Goliath in the most famous underdog story of all time.

A paper done by two doctors actually stated that Michelangelo left other clues to David's state of turmoil - the veins in his arms are popping out and his brow is furrowed.

This fresco has a sinister cameo from the devil in the clouds.

Handout and STRINGER Italy/Reuters



This hidden face was only discovered in 2011, around 700 years after it was completed. According to CBS News, art historian Chiara Furgoni noticed the face when she was trying to figure out when exactly the fresco was done.

You can clearly see a mouth, nose, eyes, and horns among the clouds.

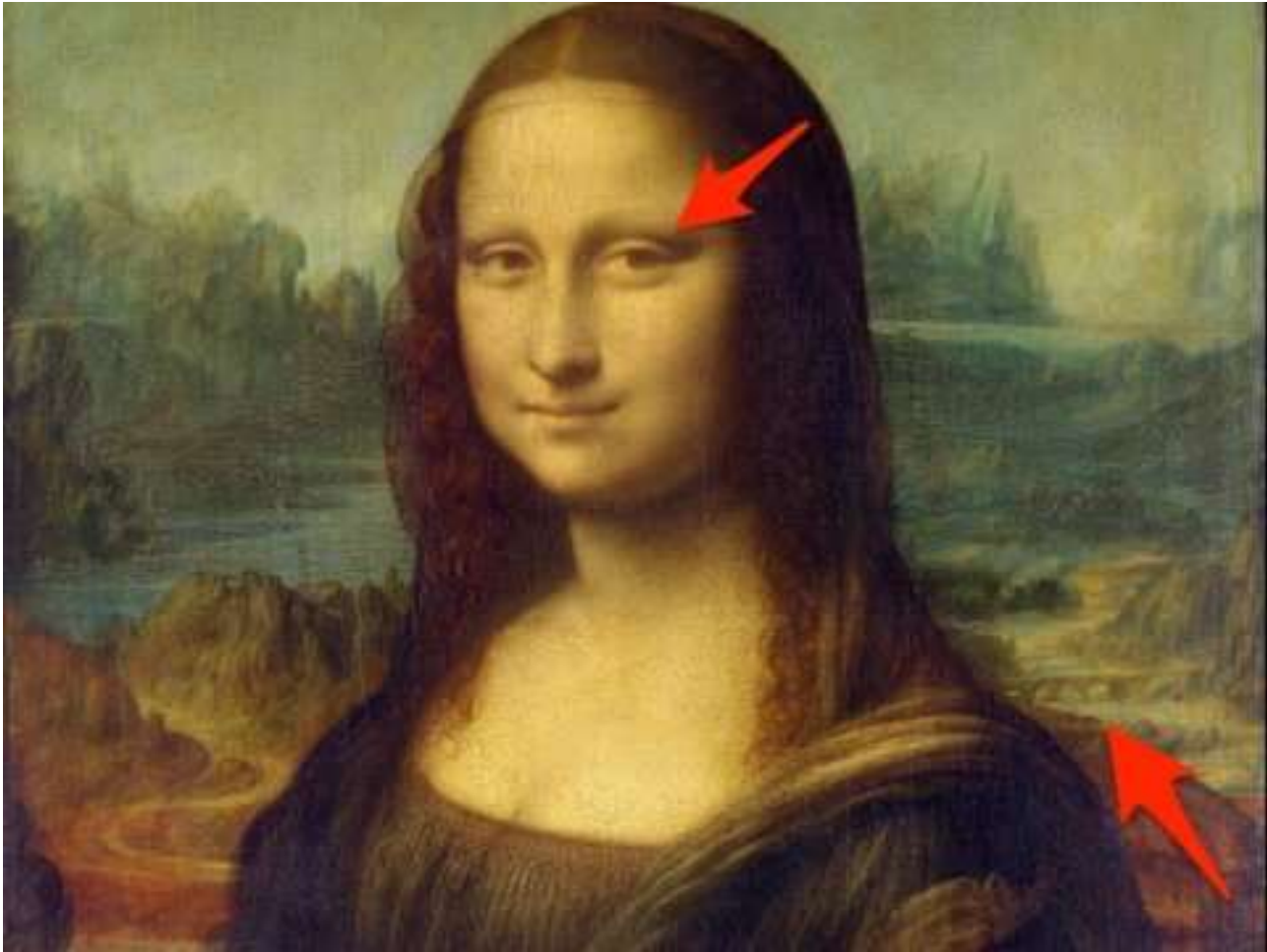
At first, this painting by Pieter Brugel appears to be an extremely detailed portrait of a busy Dutch street, but is actually much more than that.



The official title of this painting is "Netherlandish Proverbs." While there are **many** foreign proverbs depicted in the painting, there are also some classics that we still use today in America.

Clockwise starting from left: the Earth is upside-down (the whole world is upside-down), a man is running with his behind on fire (running like your butt's on fire), a man is warming himself at a house fire (not caring who is hurt as long as it benefits you/roasting marshmallows at a house fire), the three figures in the back standing in a line (the blind leading the blind), a fish eating another fish (there's always a bigger fish), a man is holding a globe (got the world in the palm of your hand), a man in armor holding a knife in his mouth (armed to the teeth), and a man is hitting his head against a brick wall (hitting your head against the wall).

The "Mona Lisa" is one of the most enigmatic portraits in history.



No, it's not proof that "The Da Vinci Code" is real, but there is some type of code hidden in the eyes of Mona Lisa (and the background of her portrait).

Members of Italy's National Committee for Cultural Heritage reported that - when viewed under a microscope - the letters LV are visible in one of her eyes, and there are other less-decipherable letters in there as well. Also visible is the number 72 on the arch in the background. Or they could potentially be L and 2. The painting *is* over 500 years old.

It's unknown what all of these symbols mean. While LV could ostensibly stand for Leonardo Da Vinci, what does 72 mean? We might never know.

The "Garden of Earthly Delights" is a huge piece of art, so there are probably dozens of Easter eggs, but the music is the most well-known.



This scene is taken from the right side of the painting, from the panel that represents Hell. In the top left corner, a person with music printed across their rear end is visible.

A college student named Amelia noticed this music, and took it upon herself to transcribe the music and record it. So, now you can officially listen to, in Amelia's words, a "600-years-old butt song from hell."

"The Arnolfini Portrait" contains a small version of its creator, Jan van Eyck.



Wikimedia Commons

"The Arnolfini Portrait" is one of the most debated paintings ever. There are opinions on everything from the sandals to the dog to the positioning of the woman's hands. But a small, easily missed detail is the small (potential) self-portrait in the mirror.

In the reflection, two figures are clearly visible. Many people think one is van Eyck, due to the artist's signature. It roughly translates to "Jan van Eyck was here." So, when taken literally, the man in the mirror could definitely be van Eyck.

"Young Woman Powdering Herself" used to contain the only known self-portrait of Georges Seurat.



The subject of this painting is Seurat's secret mistress Madeleine Knobloch. Seurat loved her so much that he originally inserted himself in the piece. The window with a vase of flowers was revealed to be concealing a mirror where the reflection of Seurat painting was visible.

Apparently, Seurat showed the piece to his friend who told him that it looked strange, so Seurat covered it up.

Committee Meetings

If there are any items which a member would like to raise for discussion by the committee, please advise any of the committee members (found on front page), or the office.

Committee Meetings 2019 (generally 3rd Thursday each month)

Thursday, 24th January 2019: 11.30am

Thursday, 28th February: 11.30am

AGM : Monday, 25th March: 10.30am

Thursday, 11th April: 11.30am

Thursday, 16th May: 11.30am

Thursday, 20th June: 11.30am

Thursday, 18th July: 11.30am

Thursday, 15th August: 11.30am

Thursday, 19th September: 11.30am

Thursday, 24th October: 11.30am

Thursday, 15th November: 11.30am

Weekly Timetable

MONDAY	Open Studio 8.30am – 1.30pm (no oils after 11am to assist those with solvent allergies)	Open Studio 1pm – 4pm (no oils) as this is a shared space with the Photography session	Rooms available 4.15pm to 6.45pm	Monday Painting Group 7–9pm Contact Carmen on 09 818 5592
TUESDAY	Bellas Artists: Lynette McKinstrie Group booking Morning FULL	Tutored: \$20 per session. 1-3pm. Smita Upadhye Full Figure Drawing in Pencil (Beginners) Book: 8385733 or 0212324438	NEW: ONCE A MONTH CRITIQUE SESSION. 3.15PM – 5PM. First session Wed, 30 Jan 19 9.30am Bring 2 paintings to be assessed by an independent judge \$2 per person	Open Studio Evenings 6.30pm – 9.00 Contact Odile Koper 09 836 4953
WEDNESDAY	Tutored: 10-12pm Drawing and Painting with Gabrielle Ryburn Ph 09 4129255 <i>Classes recommencing mid to late March 2019</i>	Life Drawing: 12.30 – 3.30pm \$15 per session Includes model fee Contact: Gillian Palmer on 09 8181306	Rooms available 3.45pm to 6.15pm	Life Drawing 6.30-9pm \$20 per session Includes model fee Contact: Tatiana Zimina 021 239 4924 <hr/> Auckland West Photography Group meet in The Homestead once a month, every 2 nd Wednesday Contact: Doug 0274816205
THURSDAY	Open Studio 8.30 – 12.30pm Drop in and join in.	Tutored 1-3pm Watercolour painting with Helen Steven Ph 09 834 5832	Rooms available 3.15pm to 6.15pm	Free: 6.30pm to 9.30pm
FRIDAY	Friday Painters 9.30-12.30pm. Contact the office for details	Tutored: \$20 per session. 1-3pm. Smita Upadhye Working with Colour (Advanced) Book: 8385733 or 0212324438	Rooms available	Rooms available
SATURDAY	Rooms available	Rooms available	Rooms available	Rooms available
SUNDAY	Rooms available	Rooms available	Rooms available	Rooms available

WCCAC Membership form 2019

Full Name:

Address..... Postcode:.....

Phone (H):..... (W): Mobile:.....

E-mail

Emergency contact:Phone (specify H, W or Cell)

In the event this is a Family Membership, please state the applicant's names:

.....

Relationship to the Member:

If you were previously a member, what year..... and for how long.....

Current artistic interests: (Please circle)

• AC=Acrylic C=Craft DR=Drawing O=Oil PT=Painting

PW= Pen & Wash P=Pottery Pa = Pastel

PHOT = Photography SC=Sculpture WC=Watercolour

- I'm also interested in (please circle): demonstrations; workshops; classes 4 / 6 / 8 week; outings; open studio sessions; social events; exhibition trips
- I may be available to volunteer during exhibitions: **Y/N**
- I'd like to receive notification of events and newsletters via email **Y/N**
- My website address is: www
- I would like to link my website to/from WCCAC's website **Y/N**
- I agree to being photographed during group sessions and this may be used in media **Y/N**

Signed _____ Date:____/____/2018

MEMBERSHIP: Individual \$40; Family Membership \$60 (\$40 for primary member & \$20 for partner and free for all under 18 children); \$20 youth (school, tertiary, university with ID)

Cheques to be made out to: **WCCAC.**

Banking Details: Kiwibank; Account No: 38 9018 0675 154 00;

Account Name: Waitakere Central Community Art Council

Please ensure you "Reference" your Name when making a deposit

Many thanks to our 2018 sponsors



GREG PRESLAND

Presland & Co.

[FRAMES] by Daniel

SUDAN HAIRDRESSING



REVELL FAMILY TRUST

**HOMESTEAD
PICTURE
FRAMERS**



artnews
NEW ZEALAND



phreon.
FINE ART PRINT STUDIO



Barnes
where creative people shop



VICKI INGHAM
RAY WHITE TE ATATU



MITRE 10 **MEGA**
HOSPICE

THE 'it' DOODLE PAGE

NOTE it, KEEP it AND ACTION it