

# Waitakere Arts

WAITAKERE CENTRAL COMMUNITY ARTS COUNCIL



## Newsletter Sept/Oct '14

### IN THIS ISSUE

- Call For Entries : **DUE BY 15<sup>TH</sup> SEPTEMBER**
- President's Communique
- Coordinators Corner;
- Focus on John & Shirley Beveridge
- Upcoming Events
- Finding Inspirations –John Lopez, Sculptor;
- Weekly Calendar

Office: 09 838 5733

Emergencies: 021 232 4438

Office Hours: Mon-Thurs  
9.30am to 2.30pm

### COMMITTEE

2014 – 2015

#### President

Odile Sprenkeling  
09 836 4953

#### Vice-President

Juliet Fitzgerald  
09 411 9944

#### Secretary

Mary Malpass

#### Treasurer

Galina Efimova

#### Committee:

Marion Sutcliffe  
Jean Cooper  
Janet Fuge  
Debbie Saliskia Wessel  
Christine Arter  
Gerry Andrews  
Peter Purcell

#### Arts Coordinator

Diane Costello

#### The Studio

Corbans Estate Art  
Centre, cnr 426 Great  
North Rd & 2 Mt Lebanon  
Lane, Henderson

P O Box 21447  
Henderson  
Auckland, 0650




**EXHIBITION**  
3-12 October 10AM - 4PM  
VIEW AT SHED 2  
CORBANS ESTATE ART CENTRE  
Free admittance: all works for sale

## CALL FOR ENTRIES

**CLOSES**  
15th September 2014

Forms from  
[wccacexhibit@gmail.com](mailto:wccacexhibit@gmail.com)  
[www.waitakerearts.com](http://www.waitakerearts.com)  
 09 838 5733  
 021 232 4438

Entry Forms are available from the office; they are downloadable from our website  
[www.waitakerearts.com](http://www.waitakerearts.com)

We would love to see members of WCCAC submitting work

## PRESIDENT'S COMMUNIQUE

Dear Members

We're just weeks away from this year's TTASA and we're in full swing with the organization of this big event.

We could do with some more volunteers, so please contact myself or Diane even if you have only a couple of hours to spare, your time is appreciated and there are a good many areas where we need assistance.

Please share this event with as many people as possible - we have small postcard size cards available in our office if you would like to distribute. We'll keep our Facebook and Website pages updated. If you are on Facebook, please share this event on your own timeline, as the more people who are aware of this event, the more visitors we'll have and this will hopefully result in more sales. Our Art Council benefits from sales of artwork at this event and so do you the artist. This is our biggest fund raiser of the year.

Diane and I travelled to Wellington for the Wellington Arts exhibition and met with the Executive Director. We were very impressed with how this event is run and hope to see a few entries from participating artists for our TTASA this year. I did recognize a few names of artists who had previously entered.

Lastly, I'm really looking forward to seeing your work entered and meeting you at our Opening Night. It should be spectacular event!

Kind Regards

**Odile Sprenkeling**  
President

## COORDINATOR'S CORNER

I'm amazed that the year has flown by so quickly and we are again looking to our next The Trusts Art & Sculpture Awards Exhibition. It's going to be a case of head down over the next few weeks where the Committee and I work as a cohesive entity to ensure we have an even better TTASA than last year.

We are delighted that our Arts Councils is entrusted with showcasing this exhibition where art is received throughout NZ. We are expecting a record number of entries and our advertising is improving each year. We hope to see all our members at the exhibition, if not to offer assistance, to come and enjoy 'art for art's sake'.

We've held a number of outings since our last newsletter and look forward to taking our members to Gibbs Farm on Thursday, 20<sup>th</sup> November.

Of significance to the broader membership, we have been offered exhibition window space at the Glen Eden Library. First to feature will be 3 of our Special Needs students from Lynette McKinstrie's class. **Glen Eden Library** will be hosting a special Exhibition Opening for them on **Monday, 6<sup>th</sup> October at 1.30pm**. Please feel free to join us.

From the 17<sup>th</sup> November through to the 14<sup>th</sup> December, the we have an opportunity to display our members work in two windows. Let me know if you are keen to display. I would need to have details such as **title, medium, price and dimensions** (no enormous pieces please).

Two inspirational quotes which to me are powerful and relevant:-

**"I am always doing things I can't do, that's how I get to do them" – PICASSO**

**"I paint objects as I think them, not as I see them" - PICASSO**

Members, we rely on your annual subscription, please check with the office to confirm that you are paid up.

**Account: ASB No: 12-3039-0846680-00.**

**Ref: Surname**

## Focus on Shirley & John Beveridge

I started painting in 1973 and exhibited first in 1974, which in those days was at Henderson High School. We had Photography, Floral Art, Sculpture, Weaving and Pottery. John exhibited his black and white photos, all home processed and mounted and I showed my paintings. The Plunket catered and sold food to raise money. It was a proud moment when Corban's bought two of my paintings with grapes.

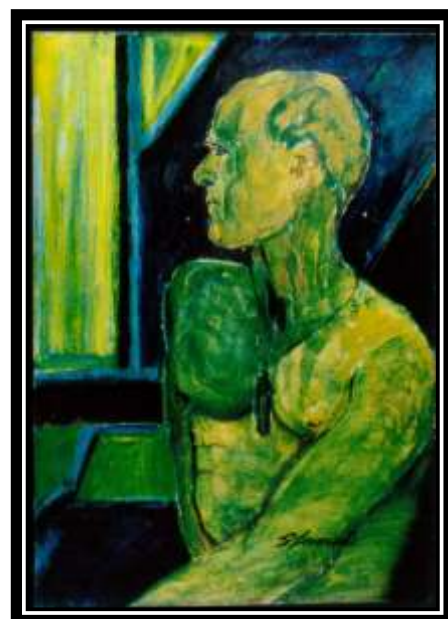
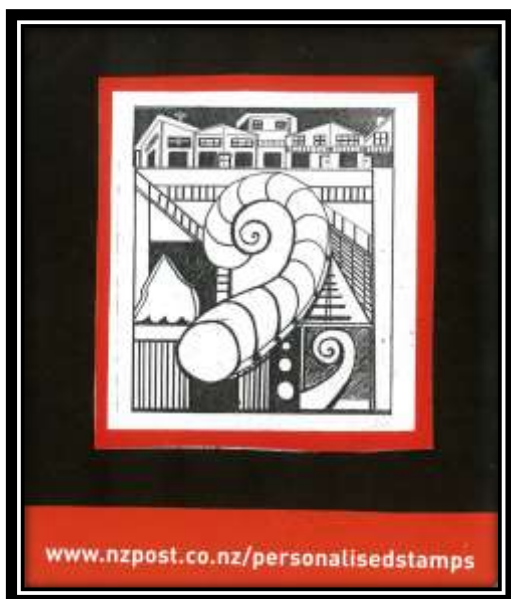
In the 80's, after an illness, I did two years correspondence and then went on to do Bursary art at Henderson. I taught people with disabilities. For ten years I taught watercolour at the Big Top at Henderson and one year at the Fellowship of Artists. I taught three weekend workshops at Uxbridge in Howick and at Wellsford.

In 1993, I started Life Drawing and Portraits, which I really enjoyed. My highlight came when TV3 came to our house and chose three of my paintings of Tessa for the programme (Women of Substance). They stayed for hours and looked at all of John's photos.

I have won quite a number of Awards over the years and sold many paintings over this time. It was a proud moment when John's photos went on display at the Bank in Henderson and most recently was a guest exhibitor at our own Members Photography Exhibition earlier this year.

There have been many changes over the last 44 years and the club has gone from strength to strength. I was honoured to be made a Life Member and we have had a wonderful time being involved with the Waitakere Arts Centre.

**Shirley & John**



## John Beveridge - Guest Photographer, 2014 Member's Exhibition

These are all negative prints, done in a home dark room to permanent quality.

I started taking photos at a very young age. I owned a Baby Brownie camera which took photos about one and a half inch square. I used to develop and print these in a washhouse on a dark night.

Later, I joined two camera clubs as well as the Photographic Society of New Zealand and became an active member. My real interest was in landscape and graphic work. I also did colour prints and colour slides, but to me monochrome is the best medium of all.

I entered many competitions and won quite a few. I also won at the Easter Show. I enjoyed all my years of photo taking and hope these prints will inspire you too.





## Our 'Very Special', Special Needs Group

Our Special Needs Group under the watchful eye of Lynette McKinstrie is producing some fine work from 3 particular young men, Nick Lamb, Daniel Casbolt and Tony Bennett.

The Glen Eden Library will be hosting an exhibition opening for Nick, Daniel and Tony on the **6<sup>th</sup> October at 2.00pm** where some of their work will take pride of place in the Exhibition Windows. Feel free to join us for their opening.

In addition, Lynette also tutors several other artists who enjoy seeing the young men develop their art. In turn Nick, Tony and Daniel benefit from being in an environment with a range of different artists who are very supportive of them. The class is encouraged to critique and involve themselves with each other's work, which is a great learning experience for all involved.



Tony Bennett

and

Daniel Casbolt's

Works of art



Nick Lamb's  
vibrant colours



Lynette McKinstrie's Special Needs & Integrated Group session

## Outings

Kaipara Coast Sculpture Trail: 18<sup>th</sup> August



---

Lopdell House & Pah Homestead: 27<sup>th</sup> August



On top of the world, the newly renovated  
Lopdell House

<http://www.lopdell.org.nz/>

---



What a magnificent display of art at Pah Homestead

<http://www.tsbbankwallaceartcentre.org.nz/>

## Franklin Art Awards: 3rd September

Five members took a trip to the Franklin Arts Awards – a really great exhibition with a range of art, craft, photography and sculpture.

## Upcoming Events

- Visit our website Calendar if you are unsure of the date and time of events as these will be displayed <http://www.waitakerearts.com/>.
- Of interest and worth a visit: Auckland Art Gallery: The Walters Prize (12<sup>th</sup> July to 12<sup>th</sup> Oct) – NZ's toughest art prize
- **OUTING Monday, 20<sup>th</sup> Oct:** Pah Homestead: 23<sup>rd</sup> Annual Wallace Art Awards (2<sup>nd</sup> Sept – 9<sup>th</sup> Nov) - \$5.
- **OUTING:** Gibbs Farm outing on **Thursday 20th November**. Depart from The Studio at 9.30am. Bookings essential. \$12 per member.
- Don't forget that we are already in an artistic zone on Corban's Estate. Visit their gallery if you happen to be in the area, as they do have some really amazing art exhibitions in the main gallery. <http://www.ceac.org.nz/exhibitions.aspx>
- If you have a website which you, as a member would like linked to our Waitakere website, let me know and I'll update our 'Links' page.
- **WORKSHOP:** Weekend Photography Workshop, 8<sup>th</sup> and 9<sup>th</sup> **November (Sat & Sun)** Impressionism photography with a session on Abstract photography with Diane Costello. **Cost:** \$130.
- **CRITIQUE/ASSESSMENT SESSION** by Lynette McKinstrie: **November** in an evening and date TBA. We will be asking different people to head these sessions.
- **UPSTAIRS LOFT:** This area will be available for you to view DVD's from the early October.

Please feel free to advise the office of any events which would benefit a group outing.



**Just how brilliant is this !** There is no stopping the ingenuity of mankind.....

Old Farm Equipment And Scrap Metal Turned Into Stunning Sculptures

South Dakotan sculptor **John Lopez** creates life-sized scrap metal sculptures with a uniquely Western American twist. In his hands, old discarded farm equipment is recycled into sculptures of iconic creatures from the American West like a bison, a horse plowing a field, or a Texas Longhorn. Lopez already had a career as a bronze sculptor, but after creating a family grave for his deceased aunt using scrap metal, he began creating recycled metal sculptures out of found or donated pieces of metal as well. "My favorite part about these pieces is the texture," explains Lopez. "I just start grabbin' stuff from the pile and welding it in, and if you weld enough of the same thing on over and over it creates this really cool texture that I've never seen in these kinds of pieces before. I think that's what draws people in."



## 24 Pieces Of Street Art That Creatively Play With Their Surroundings

<http://www.demilked.com/street-art-plays-with-surroundings/>





# WEEKLY ART SESSIONS

View the website for any additional outings or workshops

[www.waitakerearts.com](http://www.waitakerearts.com)

<b>MONDAY</b>	<b>Open Studio</b> 8.30am – 1.30pm  Drop in and join in.  (no oils after 11am to assist those with solvent allergies)	<b>Tutored:</b> Special Needs & Beginners  1.30pm-3.30pm  <b>Available for Workshops, classes, projects</b>	Monday Painting Group Booking 7–9pm  Newcomers welcome  Contact the office for details
<b>TUESDAY</b>	Bellas Artists: Lynette McKinstrie Group booking  Morning  FULL	<b>Tutored</b>  Beginners group - FULL  12.30pm to 2.30pm	<b>Open Studio</b> Evenings 6.30pm – 9.00  FULL (place your name on the waiting list)  Contact the office for details
<b>WEDNESDAY</b>	<b>Tutored:</b> Drawing and Painting with Gabrielle Ryburn 10-12noon  Ph 094129255	<b>Life Drawing:</b> 12.30 – 3.30pm  \$12 per session  Includes model fee	<b>Available for Workshops, classes, projects.</b>
<b>THURSDAY</b>	<b>Open Studio</b> 8.30 – 12.30pm  Drop in and join in.  (no oils after 11am to assist those with solvent allergies)	<b>Tutored:</b> Watercolour painting with Helen Steven  1-3pm Ph 834 5832	<b>Life Drawing</b> Class 6.15-9pm  Contact Tatiana on 555-3735
<b>FRIDAY</b>	Friday Painters group booking  9am -1pm. Contact the office for details	<b>Available for Workshops, classes, projects.</b>	<b>Available for Workshops, classes, projects.</b>
<b>SATURDAY</b>	<b>Available for Workshops, classes, projects</b>	<b>Available for Workshops, classes, projects</b>	<b>Available for Workshops, classes, projects</b>
<b>SUNDAY</b>	<b>Available for Workshops, classes, projects</b>	<b>Tutored:</b> Chinese Painting For Beginners 3-5pm \$15 per session  Wei lun Ha 021 254 2983	<b>Available for Workshops, classes, projects</b>

## Our Sponsors

**Auckland  
Council**  
*Te Kaunihera o Tāmaki Makaurau*



**Henderson-Massey  
Local Board**  
*Auckland Council*



Everything for the Artist within you.



[FRAMES] by Daniel

Revell Family Trust

Sudan Hairdressing

Greg Presland





## Newsletter Sept/Oct '14

THE STUDIO  
Cnr. 426 Great North Rd &  
2 Mt Lebanon Lane,  
Henderson, Auckland

Coordinator:  
Diane Costello

Office contact details:

Tel: 09 838 5733  
Cell: 022 088 7928

Email: [wccac@xtra.co.nz](mailto:wccac@xtra.co.nz)  
Exhibition related email  
to:  
[wccacexhibit@gmail.com](mailto:wccacexhibit@gmail.com)

Website:  
[www.waitakerearts.com](http://www.waitakerearts.com)